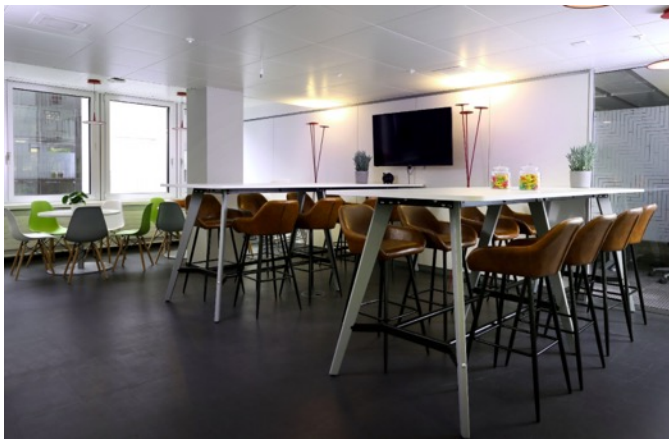
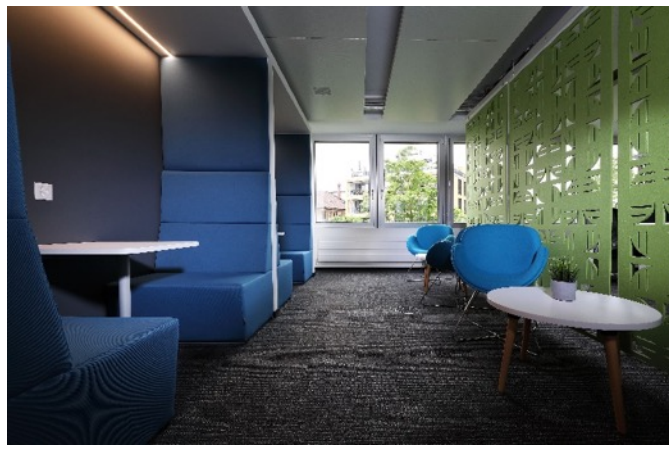




CASE STUDIES

Global Offering



ZURICH, Switzerland

Lenovo dedicated to transforming our customers' experience with technology—and how it, and they, interact with the world around us. We call this Intelligent Transformation. We are setting the stage for what's possible with technology shaped by Augmented Intelligence, capable of enhancing and elevating human capability.

“ I want to say thank you and let you know that we were all extremely pleased with the work done by your team.”

Janet Vice President





EPSILON

PARIS, FRANCE

Epsilon – Creating beautiful, effective work that turns heads. Bringing the power and expertise of global marketing company to your doorstep. Engaging, eye-catching creative is always backed by data and insights.

“I want to say thank you and let you know that we were all extremely pleased with the work done by your team.”

Janet Vice President





DUBLIN, IRELAND

PTC provides technology solutions that transform how products are created and serviced, helping companies achieve product and service advantage.

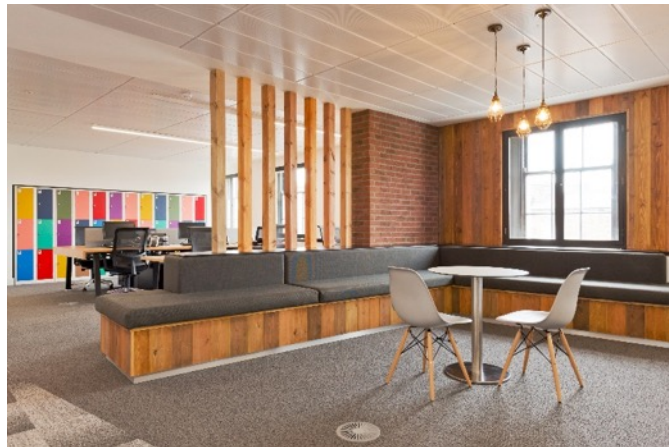
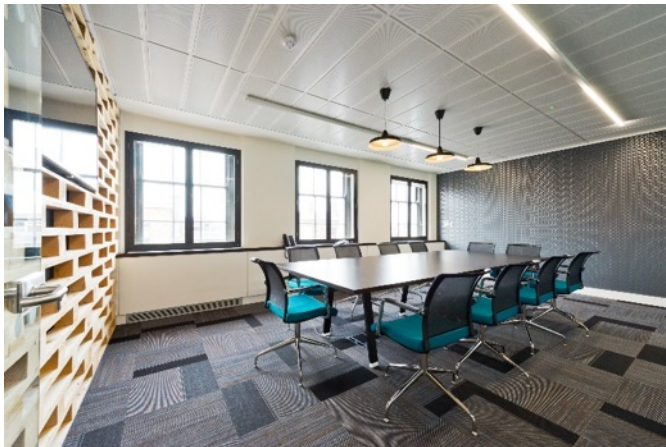
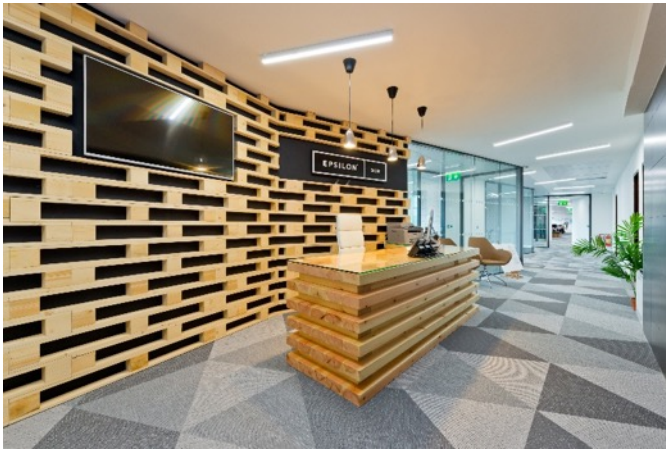
The client was looking for a design that was both sharp and professional with elements of 'fun' for their staff.

We achieved this by keeping the workplace design minimal and clean cut while added in casual collaborative areas around the building.

'CHBC office Group not only found our new office space but they designed and fitted out a workspace of exceptional quality. Their attention to detail, professional approach, collaborative attitude and seamless execution has provided PTC with one of the best offices in our real estate portfolio. We are absolutely delighted.'

Eamonn Clarke
Managing Director – Ireland





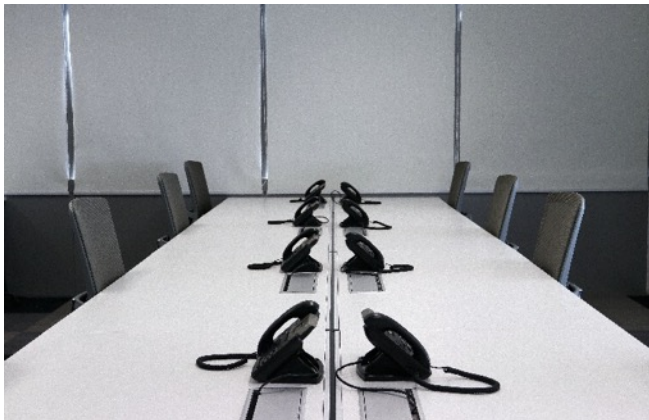
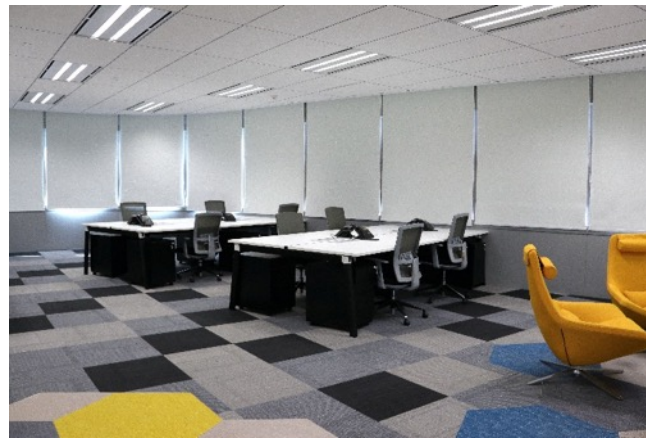
EPSILON

DUBLIN, IRELAND

To create a feeling energy, passion and commitment to delivering the best. The space planning was achieved by styling all the custom designed working desks in a communal arrangement and providing separate informal collaborative project areas to ensure that the atmosphere stays fresh and dynamic

The floor finish set-out which flows in sympathy into the black glazed doors and partitions ensuring continuity in all areas.

Specifically designed LED lighting set-outs and feature pendants throughout safeguards softer tones



Epsilon, Shanghai

Global leader in making connections between people and brands.

Marketing experts

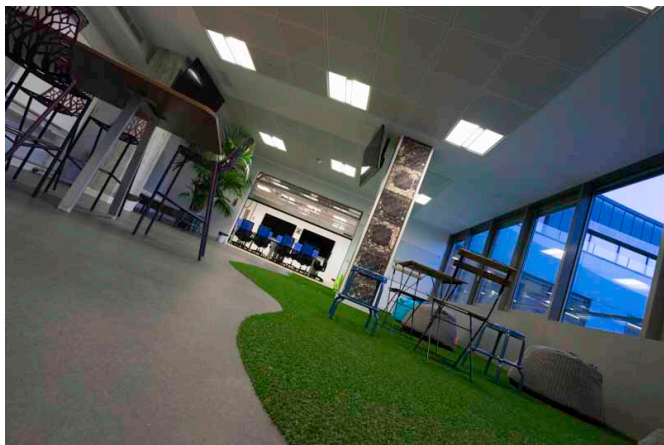
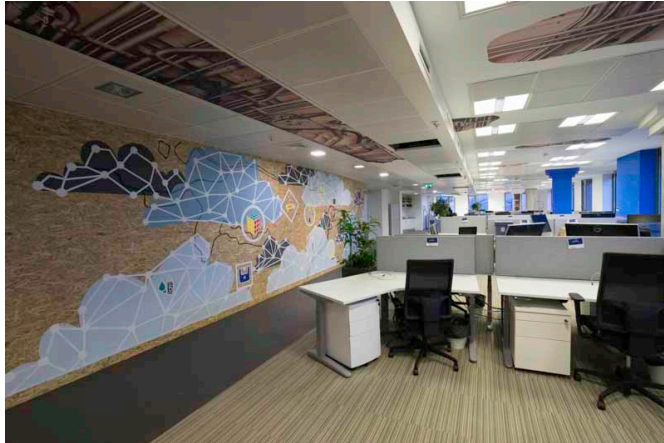
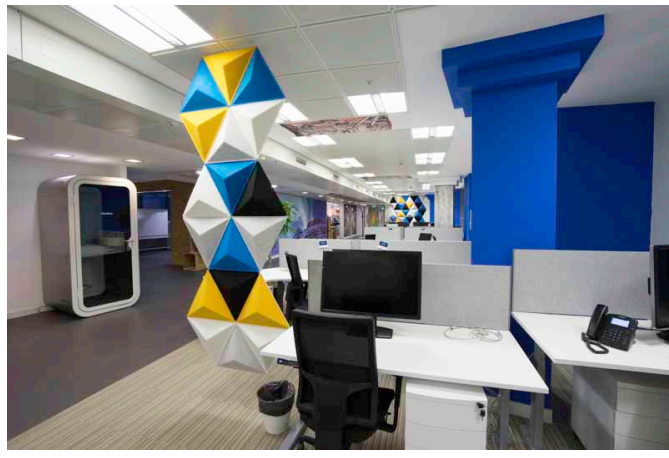
Blending data and creativity to get results.

A highly creative, full-service agency that understands people like no other.

Fusing creative, data, insights and technology to create solutions that lead your brand to success.

We fused their workstations with colour pops of Throughout, interpreting their brand palette to create a sharp, contemporary office. This space houses their creative ethos and helps productivity in the specific layout.





cloudera[®]
Ask Bigger Questions

BUDAPEST, HUNGARY

Cloudera delivers the modern platform for data management and analytics. They provide the world's fastest, easiest, and most secure Apache Hadoop platform to help you solve your most challenging business problems with data. They help solve your most demanding business challenges with data.

No matter what industry you're in, they can help. Quality data makes you more agile, innovative, competitive, and market-driven. That's why today's industry leaders focus on building new analytic capabilities with Cloudera.

'Thanks to you and your team for making this new Budapest site a successful one. The local Cloudera Budapest team and management are extremely pleased with the design and quality of the construction. People are now saying it's the premier Cloudera site in our real estate portfolio. Thanks again and thanks to your team for the long hours and hard work to pull this one off.'

Steve Hirai
Sr. Director, Corporate Services





FUJITSU

DUBLIN, IRELAND

Fujitsu's regional office in Dublin was built in the early 1990s and has not been updated since completion.

The workspaces needed inspiration. CHBC were engaged in developing designs for the modernisation of the building.

The design team developed a contemporary design to reflect the company's current brand values as well as improve the efficiency of the space. The main reception area, onsite restaurant, collaborative spaces, breakout areas and creative room.

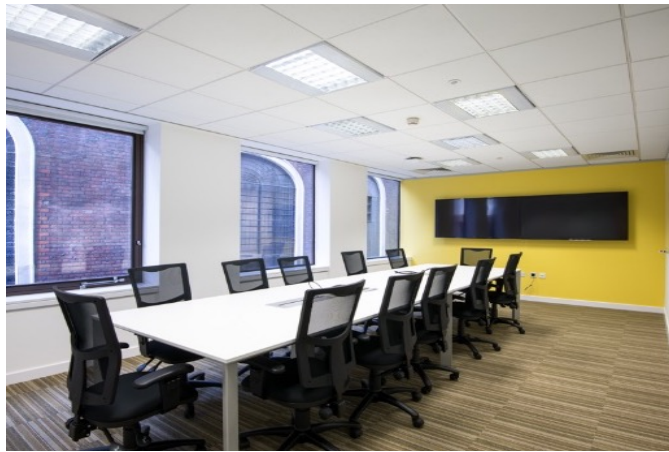


'CHBC Office Group were engaged by Fujitsu in to transform some of our work areas which were tired and outdated, including our Reception Area, Canteen, Innovation Room and staff coffee docks. We were impressed with CHBC's professionalism, ideas and responsiveness to our changing demands, the results of our building project have been extremely successful, replacing tired and dull areas with bright and vibrant spaces that and have been welcomed by our staff and visitors alike.'



Louise Brady
Marketing Manager





cloudera[®]
Ask Bigger Questions

LONDON, UK

A young, fast-growing company, Cloudera needed a flexible office space in the heart of the city for its first EMEA headquarters.

CHBC provided a fully turnkey solution for Cloudera London, all the way from design to construction to move management.





MAIDENHEAD, UK

CHBC created a space that reflected both the global nature of its travel business and its UK location, through striking graphic walls of skylines around the world and traditional red phone booths sprinkled throughout the space.





vmware®

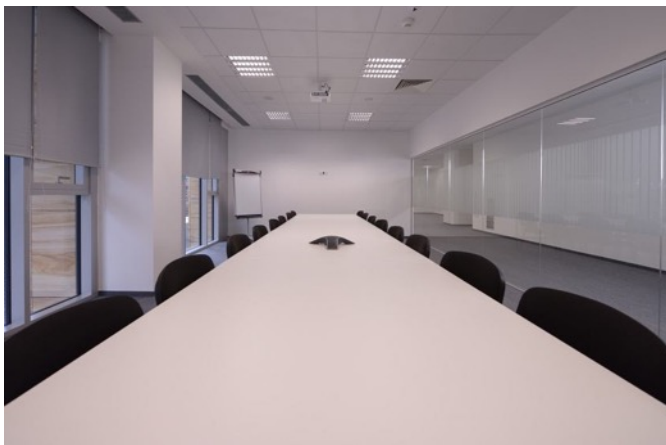
TURKEY, ISTANBUL

VM Ware needed to move to a larger space in Istanbul Turkey, they wanted branding and colour to showcase their brand and house an excited staff HQ in the business district of Istanbul.

“ Our specified lead colour was well considered and fitted into all aspects of the design”

Alicia Moreau de Justo





vmware®

WARSAW, POLAND

With a 4 week turnaround, The CHBC Group, worked tirelessly to incorporate the features that VMware wanted for their new premises in Warsaw, Poland. The glass walls give the light and space design that was important to the space.

With quirky phone booths for more private one to one meetings, the overall feel is modern and slick and incorporates all that VMware want. The break out area gives the staff an area to collaborate, inspire and promotes team work.

**“ Outstanding results
were achieved in a
minimal amount of
time”**

Alicia Moreau de Justo





AB
ALLIANCE BERNSTEIN
SYDNEY, AUSTRALIA



Ultra Building Works approached CHBC to supply and install their fit out on Level 32, Aurora Place Sydney.

CHBC Australia were delighted to showcase our expertise in one of Sydney's landmark buildings. Our client demanded the highest standard of finishing to reflect the building's uniquely curved character and we did not disappoint. Working closely throughout the project our designers and construction team achieved a beautiful and inspirational final result.



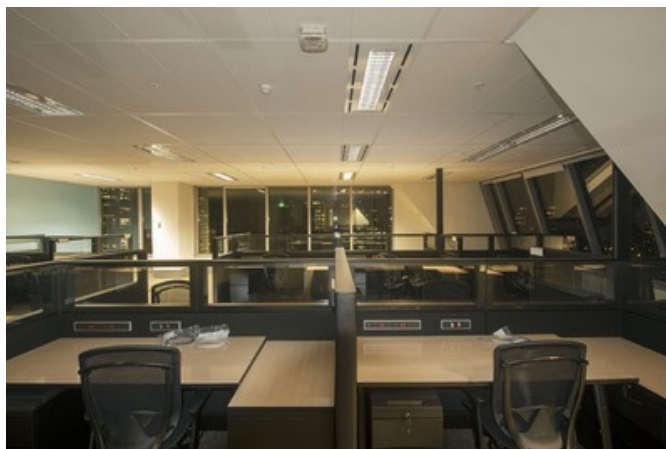
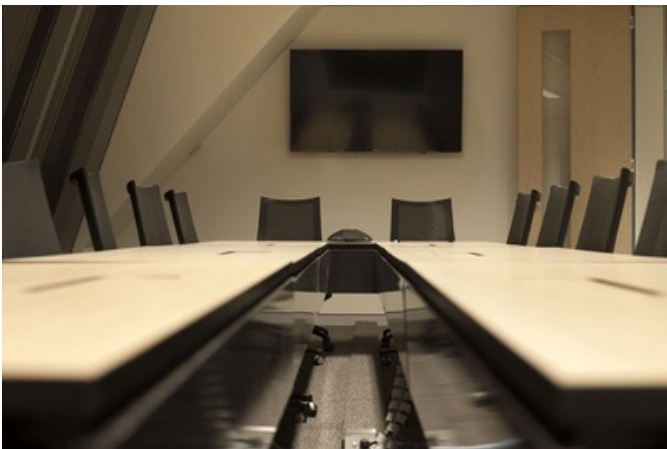
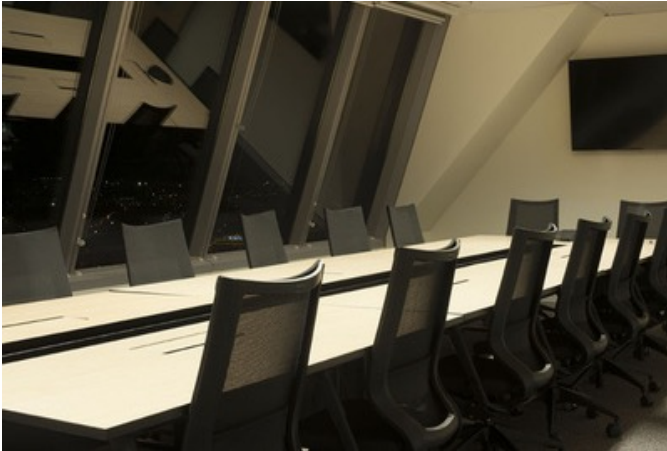


riverbed™

SYDNEY, AUSTRALIA

CHBC Australia was presented yet another opportunity to showcase what CHBC does best; deliver high quality fit outs, on time and on budget.

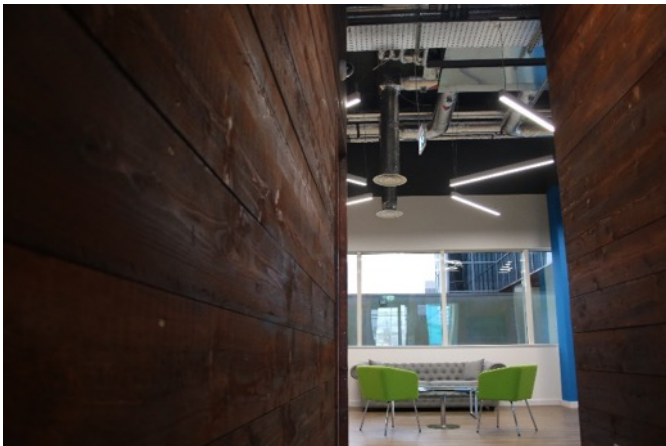
Located on 123 Pitt Street in the centre of Sydney's CBD. Moving away from the usual orange colour scheme our in house designer team created a stunning workspace using a sophisticated palette of metallic's and magnolia elegant office fit-out.



**“ It was a great
pleasure to do this
project with you”**

Robin Cline, Director Facilities
Riverbed Technology





CRAWLEY, UK

Concur are one of CHBC's many happy return clients.

For their Crawley project, the client wanted to keep the Concur branding and colouring in line with their previous project while adding in some rustic elements to the design.

The design team at CHBC skilfully executed this by using natural raw woods throughout the space. Placed alongside Concur's pop colour branding a great contrasting design was accomplished.

"After successfully completing projects for Concur in Manila, Sydney, Frankfurt, Prague, Sittingbourne and Maidenhead CHBC Office Group were the natural choice for our latest project in Crawley, London. Once again CHBC designed and delivered an exemplar project which successfully reflected Concur's mission, vision and values. Their global capabilities, collaborative approach, attention to detail and quality workmanship made them a natural choice and ensured our new workspace met Concur's very high expectations."

Steve Warner
Director Real Estate and Facilities
EMEA & APJ BNA Group
Concur Technologies



OUR LOCATIONS



Dublin	Manila	San Francisco
London	Sydney	Tel Aviv
Frankfurt	Bangalore	Istanbul
Moscow	Vancouver	Milan
Tokyo	Toronto	Munich
Singapore	Riyadh	Bahrain
Buenos Aires	Dubai	Warsaw
Budapest		





Fixed Cost, Zero Risk, Managed Workspaces



CHBC Office Group, Clonmel House, Forster Way, Swords, Ireland
Tele: +353 1 8970200 Email: info@chbc.eu Web: www.chbcgroup.net